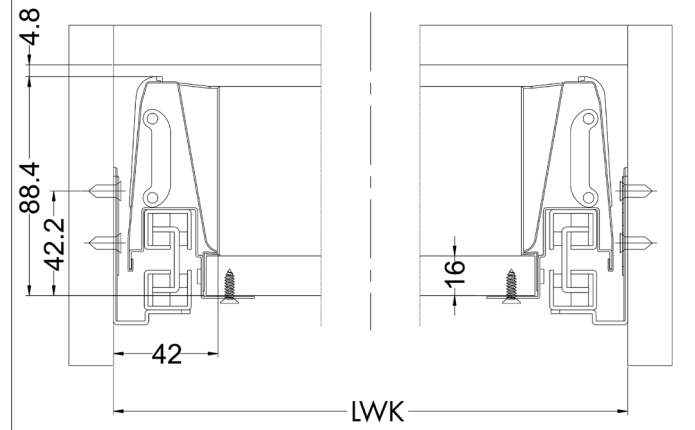
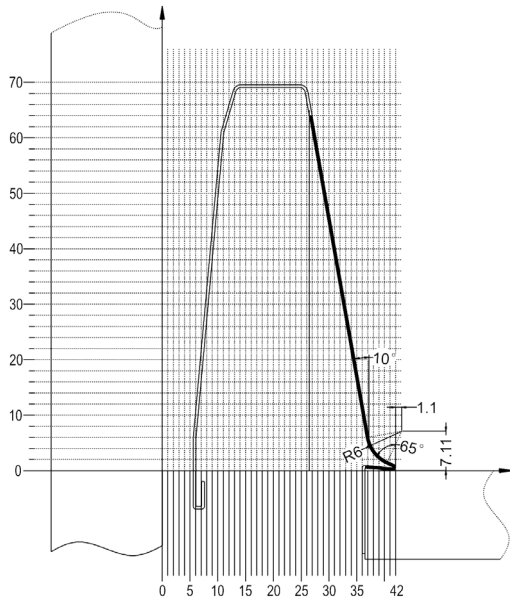


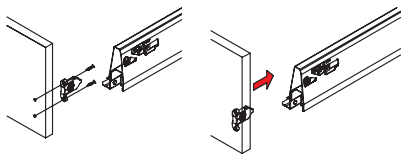
# SLIDEBOX

## Tehnički podaci

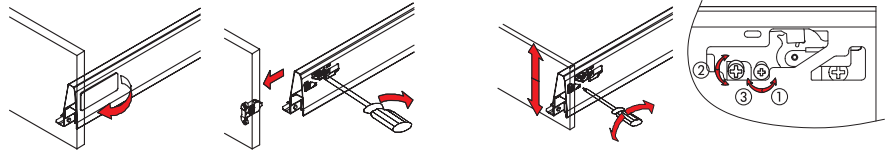


**Podešavanje po visini putem ekscentra**  
obostrano  $\pm 2$  mm.  
Stezni vijak otpustiti sa obje strane. Namjestiti frontu i ponovno pritegnuti stezne vijke.

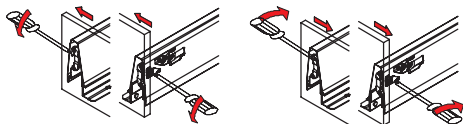
### Montaža fronte



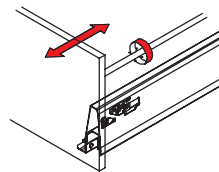
### Demontaža fronte



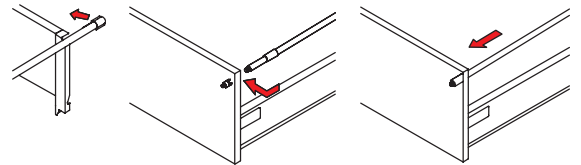
### Bočno podešavanje $\pm 1$ mm



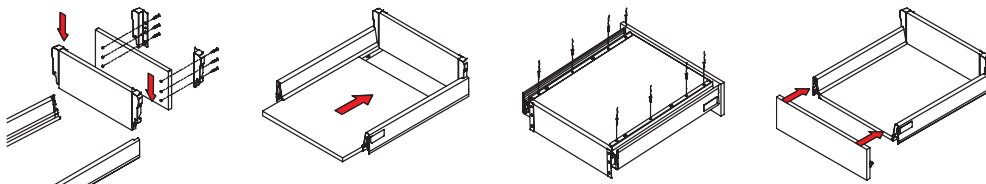
### Podešavanje nagiba



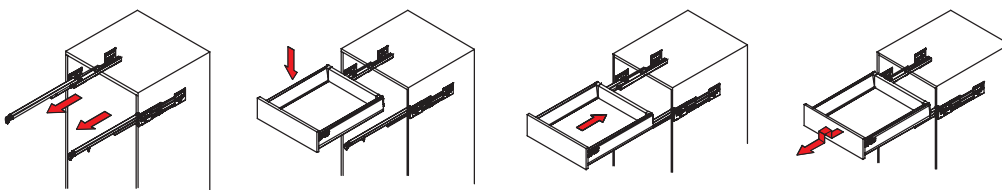
### Montaža relinga



### Sastavljanje ladice



### Postavljanje/skidanje ladice



Navedene dimenzije nisu obavezujuće. Zadržavamo pravo na tehničke promjene!